



PIONEER

Health Data Research Hub

Synthetic Dataset Of Hospitalized Patients with an Acute Exacerbation of Asthma

Data range for infographic: 10.2020-12.2021
Other extended time periods are available on request

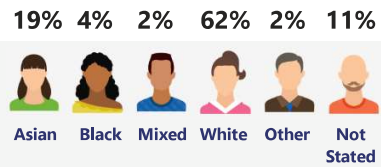
A synthetic dataset of hospital admissions for 561 patients admitted with an acute exacerbation of asthma, including their demographics and clinical records collected during hospital admissions.

Demographic

The dataset includes:

- Young adults **14.3%** (ages 18-25)
- Adults **81.3%** (ages 26-64)
- Older adults **4.4%** (ages 65+)

There are **67%** female and **33%** male patients.



Clinical Information

Observations:

- **17K** observation results

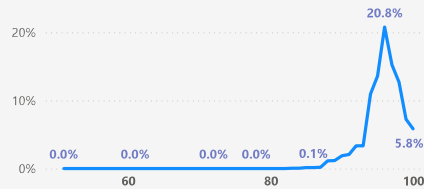
Laboratory Tests:

- **2K** Eosinophils blood test results

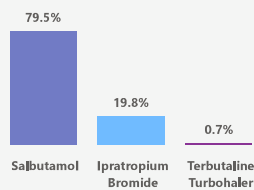
Prescriptions:

- **815** Prescriptions, including medication details, mode, quantity, etc.

Observations O2 sats (%)



Prescriptions



Site Moves

Transferred from A&E:

- **52%**

Transferred onwards from AMU:

- **18%**

Transferred to ITU:

- **7%**

Inpatient care

- **561 Hospitalized Spells:** encompasses **430** unique patients admitted to critical care
- **239K Total Hours:** representing hospital data, with an average in-hospital length of stay of **18 days** per patient
- **30-Day Post-Discharge A&E Readmission:** 21% of patients were readmitted to A&E
- **Mortality Rate:** 7%