



# PIONEER

Health Data Research Hub

## Immune Checkpoint Inhibitor Synthetic Data: HDR UK Medicines Programme Resource

Data range for infographic: 01/2015 - 09/2023  
Other extended time periods are available on request

A synthetic dataset featuring patient-level information for 683 cancer patients treated with checkpoint inhibitors, including demographics, primary cancer diagnoses, details of ICI treatments, and other clinical records during hospital admissions.

### Demographic

The dataset includes:

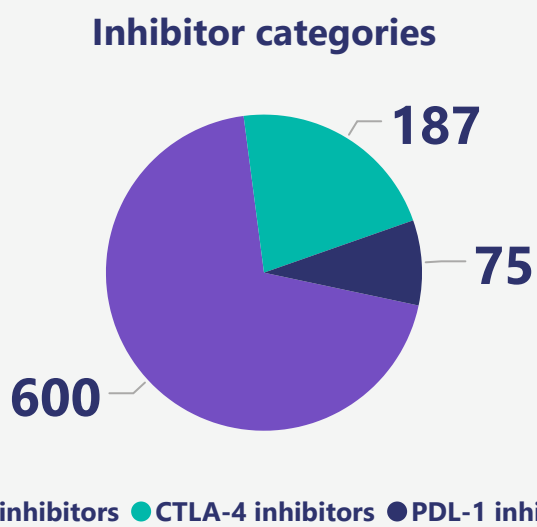
- Young adults **2%** (ages <34)
- Adults **44%** (ages 35-64)
- Elderly **54%** (ages 65+)

**63%** of immune checkpoint inhibitor (ICI) treated patients are male and **37%** of ICI patients are female.

5% 1% 1% 84% 1% 8%

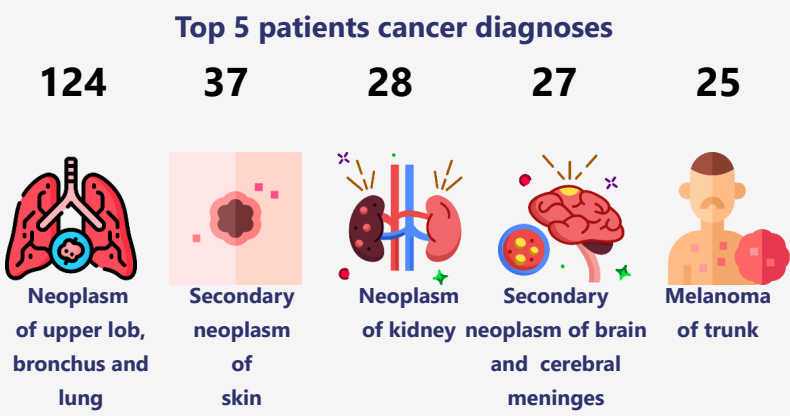


Asian Black Mixed White Other Not Specified



### Immune checkpoint inhibitors

**49%** of patients are treated with Nivolumab, a PD-1 inhibitor. Followed by **41%** of patients treated with Pembrolizumab and **27%** with Ipilimumab.



### Cancer types

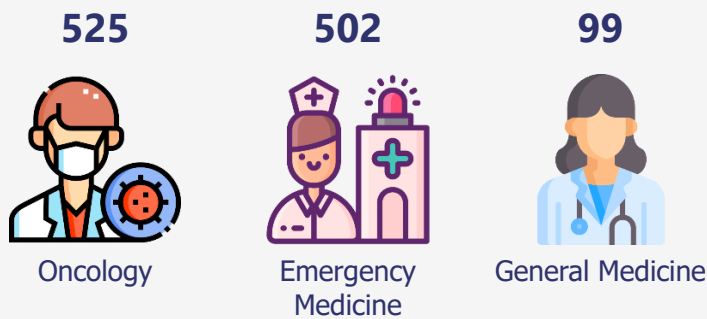
- **63%** diagnosed with neoplasm or melanoma of skin
- **14%** diagnosed with secondary neoplasm

Other cancer types are available.

### Inpatient care

- **15,177** Hospitalized spells
- **683** Patients Admitted to Critical Care
- **86,000** Days of Hospital Data
- **8-hour** Median In-Hospital Length of Stay
- **26%** In-Hospital Mortality Rate
- **70%** of Patients Surviving 12 Months After Discharge
- Median National Early Warning Score: **1**

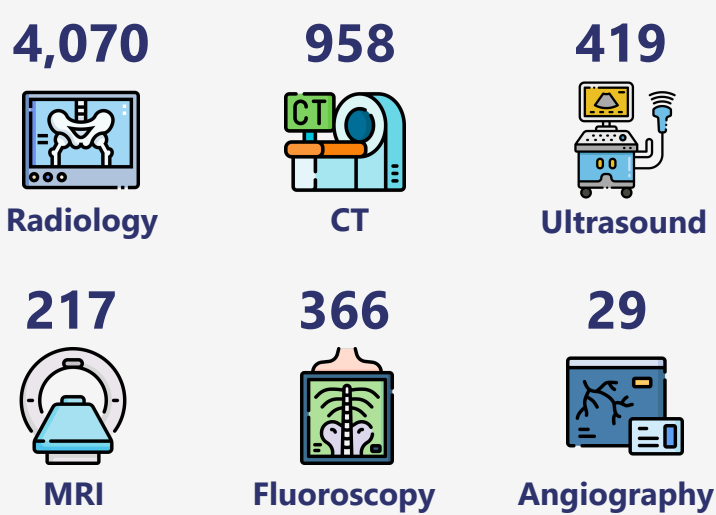
### Top 3 Consultation directorate



### Top 4 Therapy treatment



### Medical imaging



Other medical imaging are available.

### Medical procedures

Top 5 medical procedures are:



Other procedures are available.