



# PIONEER

## Health Data Research Hub

## NIHR Midlands PSRC dataset: Guideline Adherence in Community Acquired Pneumonia

Data range for infographic: 01.01.2018-15.10.2024  
Other extended time periods are available on request

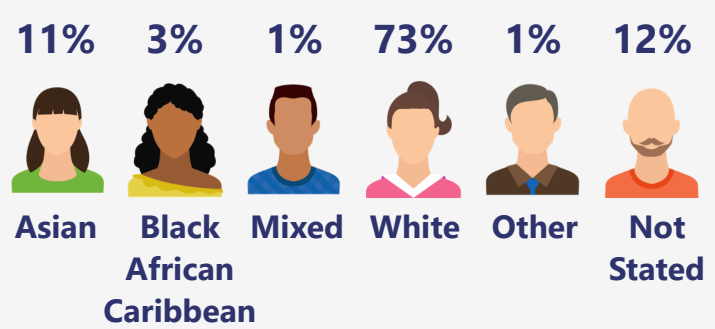
A highly granular dataset of 31,417 patients with Community Acquired Pneumonia curated by PIONEER for NIHR Midlands Patient Safety Research Collaboration with demographics, comorbidities, serial vital signs, imaging and labs; medications, outcomes.

### Demographic

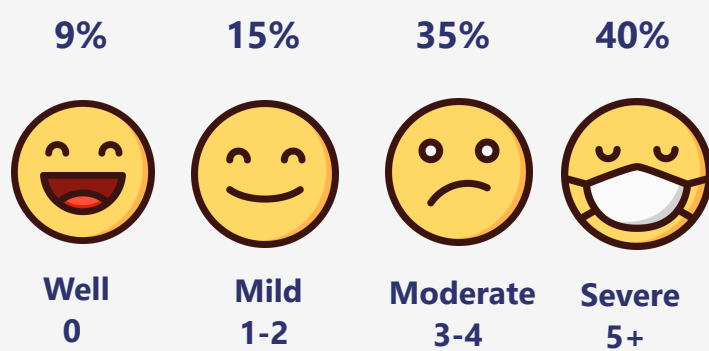
The dataset includes:

- Young adults **1%** (ages 18-24)
- Adults **28%** (ages 25-64)
- Older adults **71%** (ages 65+)

Based on the index of multiple deprivation map, **46%** of the population are from most deprived areas and **10%** of patients are from least deprived areas.



### Charlson Comorbidity Index Score

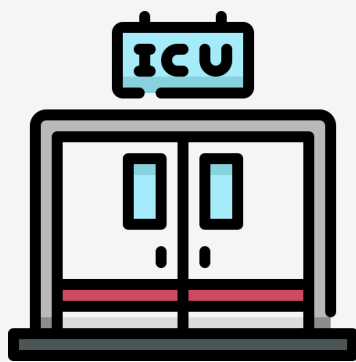


### Comorbidities

Top 5 diagnoses are:

- **18K** Essential (primary) hypertension
- **16K** Lobar pneumonia
- **14K** Diabetes
- **8K** Dementia
- **970** Stroke

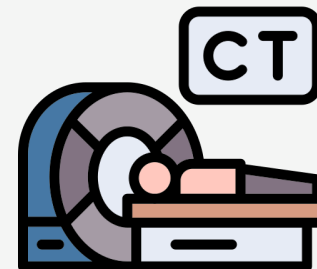
Other diagnosis are available



### Intensive Care Unit

Total of **2K** intensive care unit (ICU) admission. Average LOS in ICU is **8** days. The median presenting score for sequential organ failure assessment is **5**.

102K



### Thoracic Imaging

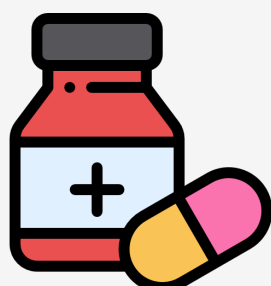
- **86K** XR Chest
- **7K** CT Angiogram pulmonary
- **2K** CT Thorax

Other imaging details are available

### Inpatient care

- **26,560** Hospitalised spells; containing **31,417** unique patients admitted for CAP
- **367K** days worth of hospital data with an average in-hospital length of stay of 11 days
- In-hospital mortality rate of **15%** and **94%** of patients surviving 30 days after discharge
- The average Clinical Frailty Score is **5.44** and the median AMT10 score is **5**

162K

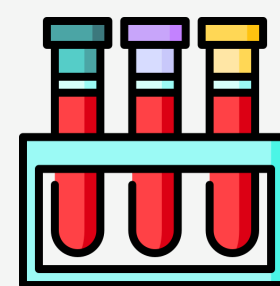


### Antibiotics

- **46K** Co-amoxiclav
- **27K** Clarithromycin
- **20K** Amoxicillin
- **14K** Levofloxacin

Other medication are available

10M



### Laboratory Test

**177K** Inflammatory markers are recorded. The average C-reactive protein is **97.6 mg/L**

Other laboratory test are available