



PIONEER

Health Data Research Hub

TBC

Data range for infographic: 01.04.2023-31.03.2024
Other extended time periods are available on request

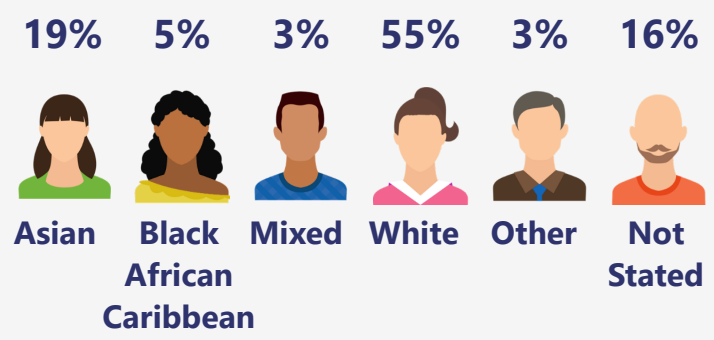
TBC

Demographic

The dataset includes:

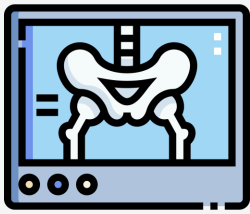
- Children **20%** (ages 0-18)
- Adults **54%** (ages 18-64)
- Older adults **26%** (ages 65+)

51% of the population are female and 49% of the population are male.



Imaging requested in SDEC ward

812



X-ray

257



CT

Other imaging types are available.

Same day emergency care

16K Spells are admitted to Same Day Emergency Care (SDEC) ward with a median length of stay of 8 hours.

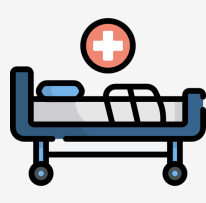
The median Ambulatory care (AMB) score is 6 and the median Glasgow Admission prediction (GAP) score is 17.

27%



Ambulatory care (AMB >= 5)

73%



Admission to hospital (AMB < 5)

Ambulatory care score

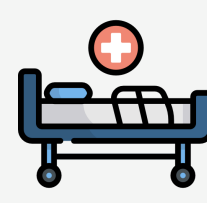
AMB score is a seven-element scoring system that helps identify patients who may be acutely ill or at risk of immediate deterioration. The average AMB score is 6.

61%



Discharge (GAP <= 15)

39%



Admission to hospital (GAP > 15)

Glasgow admission prediction score

GAP score is used to predict whether a patient will be admitted to hospital after an ED visit. The average GAPS score is 15.

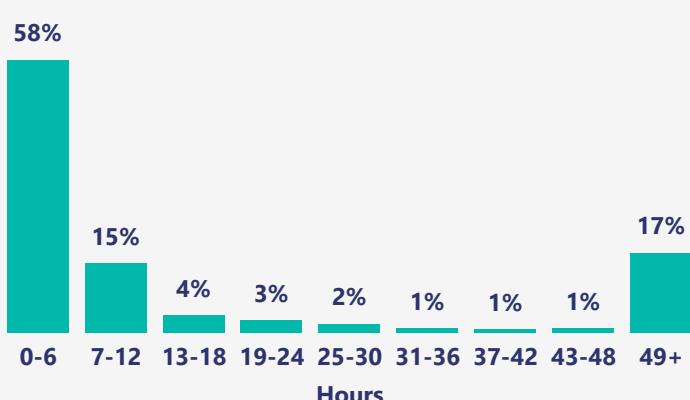
Inpatient care

- **348,191 Hospitalised spells;** containing **234,390** unique patients admitted to ED
- **746K** days worth of hospital data with an average in-hospital length of stay of 2 days
- In-hospital mortality rate of 1% and 99% of patients surviving 30 days after discharge
- The average National Early Warning Score (NEWS2) is 1 and the average AVPU scale is 4

Length of stay

The average age of patients who stay 0-6 hours are 34 years old.

The average age of patients who stay 49+ hours are 67 years old.



Pain score

The average pain score is 2 with a median pain score of 0.

