



PIONEER

Health Data Research Hub

Investigation pathways for patients presenting to hospitals with headaches

Data range for infographic: 01.01.2013-31.12.2023
Other extended time periods are available on request

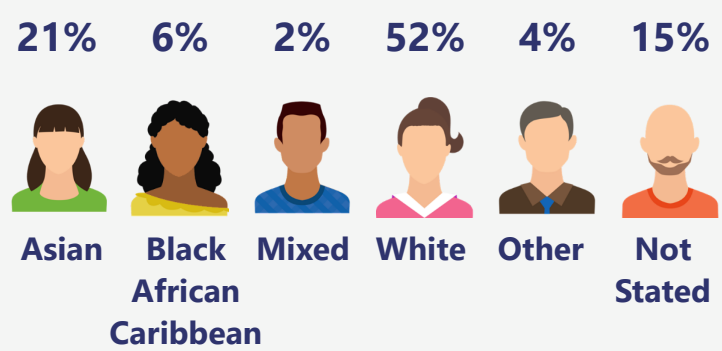
A highly granular dataset of 33,276 patients presenting with headaches to unplanned and emergency care. The data includes demographics, vital signs, acuity, comorbidities, laboratory sample results, investigations and outcomes.

Demographic

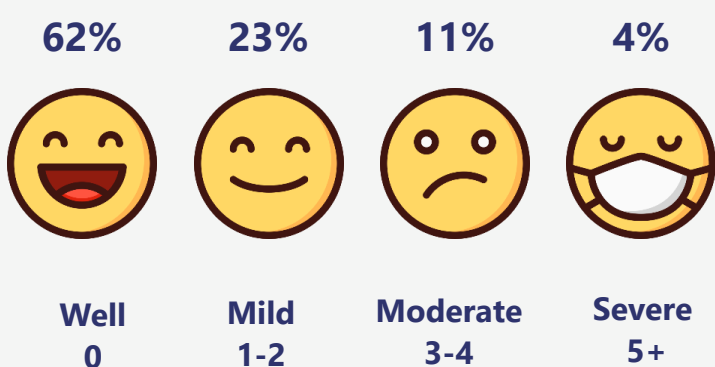
The dataset includes:

- Young adults **15%** (ages 18-24)
- Adults **69%** (ages 25-64)
- Older adults **16%** (ages 65+)

Based on the index of multiple deprivation map, **54%** of the population are from most deprived areas and **7%** of patients are from least deprived areas.



Charlson Comorbidity Index Score



Diagnosis

Top 5 diagnoses in patient spells are:

- **57K** Headache
- **10K** Essential (primary) hypertension
- **9K** Migraine
- **6K** Tension-type headache (disorder)
- **2.5K** Subarachnoid haemorrhage

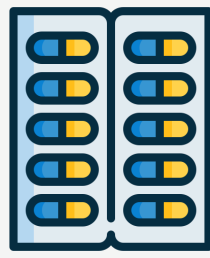
More Diagnosis details available

601



Anticoagulant

3301

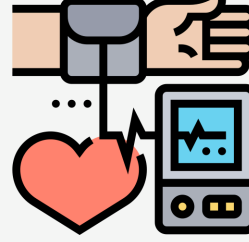


Migraine Medicine

Prescription

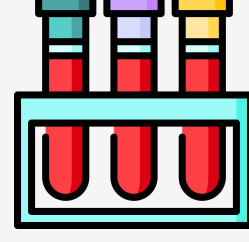
- Over **17,101** prescriptions recorded
- The most common acute migraine drug is Paracetamol with **668** prescriptions

1M



Observation

811K



Laboratory Tests

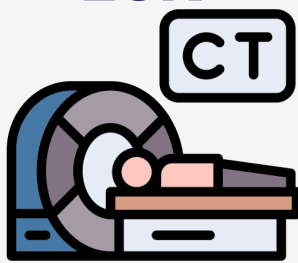
Measurements

2601 Cerebrospinal fluid (CSF) test recorded with an average of **3.66** mmol/L for CSF Glucose and an average of **0.52** g/L for CSF Protein

Inpatient care

- **39,395** Hospitalised spells; containing **33,276** unique patients with emergency admissions.
- **53K** days worth of hospital data with an average in-hospital length of stay of **1** day.
- **7,340** out of hours admission and **17%** of spells readmitted to hospital within 30 days.
- The median Thrombosis score is **0** and the median Manchester Mobility score is **3**.

28K



CT scans

4199



MRI scans

Medical Imaging

- **731** CT Venogram Intracranial
- **249** CT Venogram
- **249** MRV Venogram

Other image details are available



Referrals

- **10K** General Medicine
- **2903** Neurosurgery
- **1183** Emergency Medicine

Other referral details are available