



# PIONEER

## Health Data Research Hub

### Investigation pathways for headache patients aged 65+ in acute hospital settings

Data range for infographic: 01.01.2013-31.12.2023  
Other extended time periods are available on request

A granular dataset of 5,352 patients aged 65+ presenting with headaches to unplanned and emergency care. Includes demographics, vital signs, acuity, comorbidities, lab results, investigations. Offers insights into pathways and outcomes for older adults.

#### Demographic

The dataset includes patients aged 65+:

- Female **64%**
- Male **36%**

Based on the index of multiple deprivation map, **42%** of the population are from most deprived areas and **13%** of patients are from least deprived areas.

12% 4% 1% 68% 2% 14%



Asian Black African Caribbean Mixed White Other Not Stated

#### Charlson Comorbidity Index Score

18%



Mild  
1-2

60%



Moderate  
3-4

21%



Severe  
5+

#### Diagnosis

Top 5 diagnoses in patient spells are:

- 9,550 Headache
- 5,234 Essential (primary) hypertension
- 923 Tension-type headache (disorder)
- 856 Migraine
- 391 Subarachnoid haemorrhage

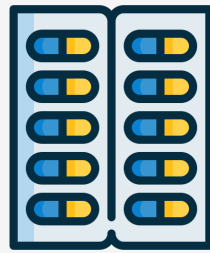
More Diagnosis details available

335



Anticoagulant

1117

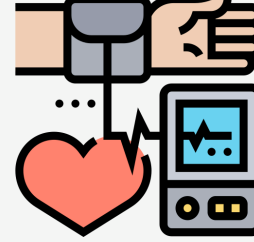


Migraine Medicine

#### Prescription

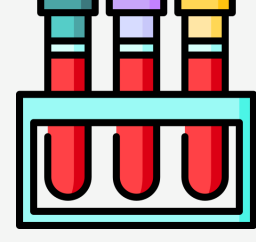
- Over **7,123** prescriptions recorded
- The most common acute migraine drug is Paracetamol with **286** prescriptions

328K



Observation

215K



Laboratory Tests

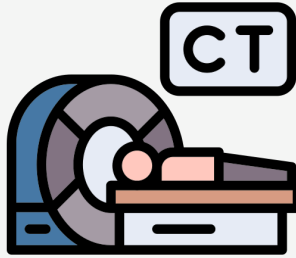
#### Measurements

**238** Cerebrospinal fluid (CSF) test recorded with an average of **3.66** mmol/L for CSF Glucose and an average of **0.52** g/L for CSF Protein

#### Inpatient care

- 6,135** Hospitalised spells; containing **5,352** unique patients with emergency admissions.
- 16K** days worth of hospital data with an average in-hospital length of stay of **2** days.
- 1,057** out of hours admission and **20%** of spells readmitted to hospital within 30 days.
- The median Thrombosis score is **1** and the median Manchester Mobility score is **6**.

4768



CT scans

802



MRI scans

#### Medical Imaging

- 50** CT Venogram Intracranial
- 13** CT Venogram
- 10** MRV Venogram

Other image details are available

4130



#### Referrals

- 2012** General Medicine
- 196** Emergency Medicine
- 183** Neurosurgery

Other referral details are available