



PIONEER

Health Data Research Hub

Intentional Self-Poisoning Emergency Admissions Presenting To Hospital

Data range for infographic: 03.12.2015-30.12.2023

Other extended time periods are available on request

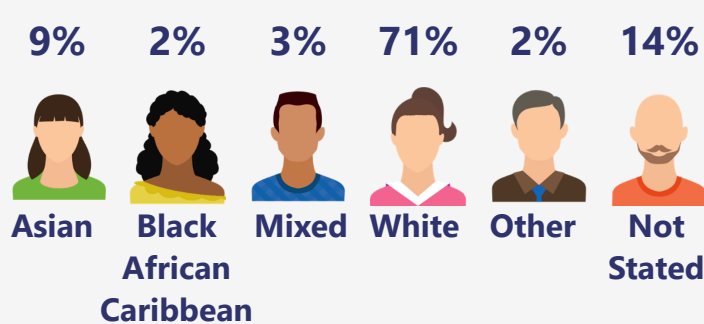
Highly granular data for 11.3K admissions over an 8-year period to A&E for deliberate self poisoning. Data includes demography, diagnostic codes, type of overdose, therapies, time in A&E. Outcomes including referral to specialist mental health services.

Demographic

The dataset includes:

- Children **17%** (ages 0-17)
- Adults **78%** (ages 18-64)
- Older adults **5%** (ages 65+)

Based on the index of multiple deprivation map, **57%** of the population are from most deprived areas and **6%** of patients are from least deprived areas.



Location of self-poisoning

7782



Home

2923



Unspecified

232



Other

208



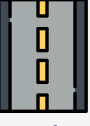
Public area

110



Residential institution

57



Street and highway

40



Trade and service

< 10



Sports and athletics

Intentional self-poisoning

Exposure to:

- nonopioid analgesics, antipyretics and antirheumatics **6027 spells**
- antiepileptic, antiparkinsonism and psychotropic drugs **5276 spells**
- narcotics and psychodysleptics **2760 spells**

Other self-poisoning are recorded.

Antidote prescriptions

4499



Acetylcysteine

619



Naloxone

79



Activated charcoal

Medications

97K prescriptions recorded with **376K** drug administrations.

Other medications are available.

Admissions



During Covid19

Over **2K** Spells during COVID19 between march 2020 to Dec 2021 with an increase of 19% self-poisoning admissions.

Inpatient care

- **11,267 Hospitalised spells;** containing **8,138** unique patients admitted for self-poisoning
- **43K** days worth of hospital data with an average in-hospital length of stay of 3 days
- In-hospital mortality rate of 0.6% and 99.7% of patients surviving 12 months after discharge
- **32K** Hospital medical procedures recorded in OPCS4 and SNOMED code

Referrals

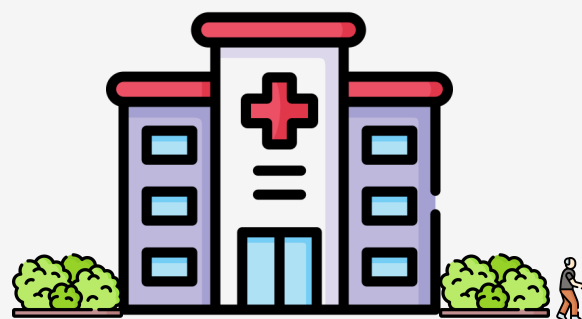
4K spells referred to liaison psychiatry with **758** patients who previously been referred to liaison psychiatrist.



Other referrals are available.

Discharge destination

- **10K** Home including temporary place of residence
- **458** Mental health care facility



Other discharge locations are available.