



# PIONEER

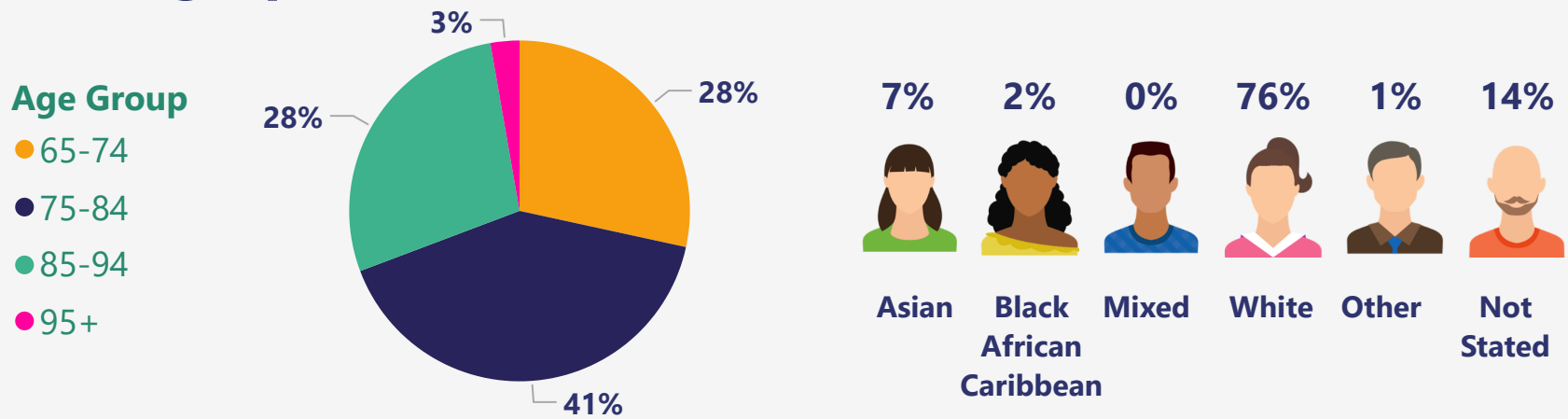
## Health Data Research Hub

## Demography, Interventions & Outcomes Of Older Patients Following Stroke

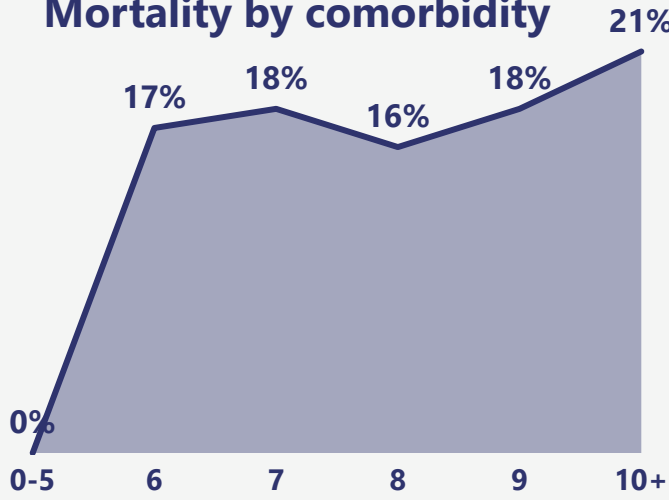
Data range for infographic: 01.01.2000-02.02.2022  
Other extended time periods are available on request

24,783 older patients admitted with a stroke. Granular detail of care pathways. Multi-morbidity, investigations, interventions and treatments. Serial physiology, blood biomarkers, physiotherapy, outcome. Deeply phenotyped.

### Demographic



### Mortality by comorbidity



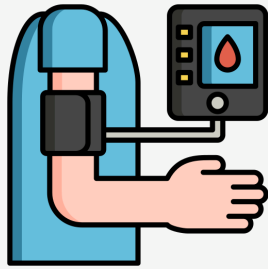
### Comorbidities

Top 5 diagnoses inpatient spells:

- 21K Cerebral infarction
- 19K Essential (primary) Hypertension
- 7K Cerebrovascular accident
- 6K Suspected cerebrovascular accident
- 4K Other specified cerebrovascular diseases

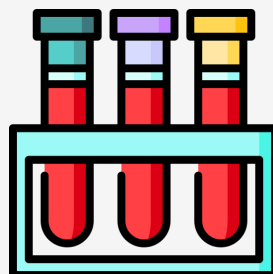
Other diagnosis are available

7M



Vital Signs

4M

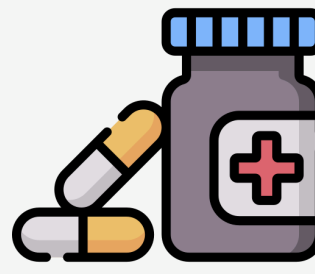


Laboratory Tests

### Measurements

- 993K Blood Pressure
- 572K O2 sats (%)
- 524K Respiratory Rate

83K



Antiplatelets

28K



Anticoagulant

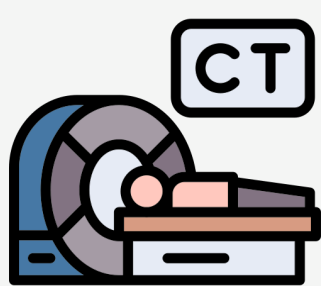
### Medication

- 3M drug administered
- The most common direct oral anticoagulant is Apixaban with 18K administrations

### Inpatient care

- 29,333 Hospitalised spells; containing 24,783 patients diagnosed with Stroke
- 530K days worth of hospital data with an average in-hospital length of stay of 18 days
- The average Glasgow Coma Scale is 12 (moderate traumatic brain injury)
- Based on the index of multiple deprivation map, 19% of the population are from most deprived areas and 7% of patients are from least deprived areas

7M



### Imaging

- 36K Radiology
- 30K CT
- 7K MRI

Other Imaging details are available

103M



### Therapy

- 51K Physiotherapy
- 30K Occupational therapy
- 14K Speech and language therapy

Other Therapy details are available