



PIONEER

Health Data Research Hub

Unplanned General Medical Attendances And Patient Flow Data

Data range for infographic: 01.01.2020-31.12.2024

Other extended time periods are available on request

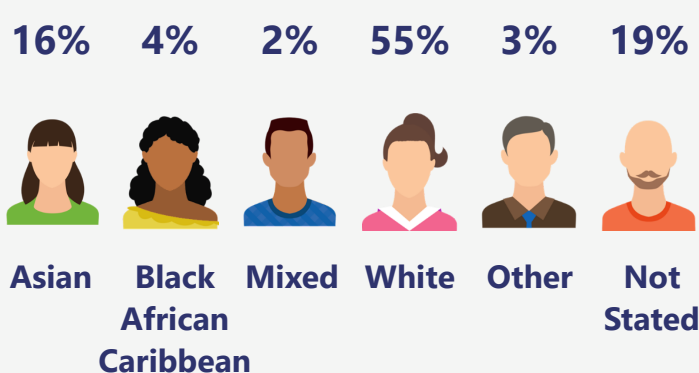
Granular dataset of 1.3M Emergency Department admissions (2020-24). Features demography, comorbidities, symptoms, wards movements, imaging, serial physiology/investigations, medications & outcomes. Supports modelling of medical patient outcomes.

Demographic

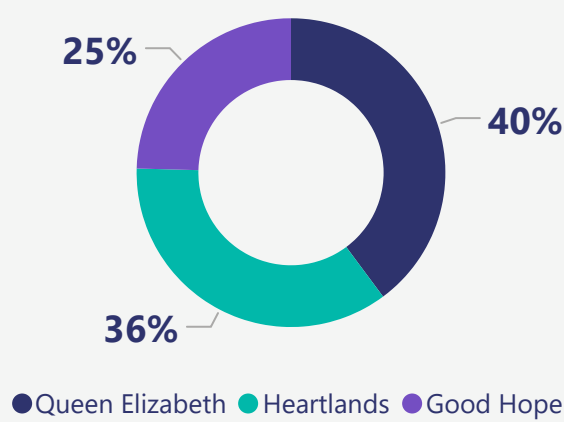
The dataset includes:

- Young adults **15%** (ages 16-24)
- Adults **56%** (ages 25-64)
- Older adults **29%** (ages 65+)

Based on the index of multiple deprivation map, **52%** of the population are from most deprived areas and **8%** of patients are from least deprived areas.



A&E hospital site



Emergency department

Attendances who had:

- Bloods sent in ED **50%**
- Medicine administered in ED **29%**
- Top 3 medicines:
 - Paracetamol **10%**
 - Co-amoxiclav **5%**
 - Hartmann's Solution **4%**
- X-ray done in ED **34%**
- CT done in ED **12%**
- Other imaging done in ED (MRI, US, etc) **1%**

59%



Low risk
(0-1)

26%



Moderate risk
(2-4)

15%



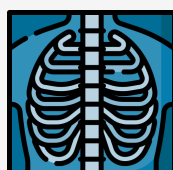
High risk
(5+)

Charlson comorbidity index

The average Charlson Comorbidity Index (CCI) at discharge is 1.9 with a median of 1.

CCI at other timepoints are available.

13%



Xray
in AMU

9%



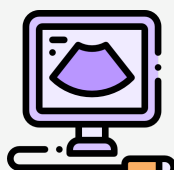
CT
in AMU

3%



MRI
in AMU

5%



US
in AMU

Acute medical unit

203K admissions to AMU with an average length of stay of 34 hours. **62%** of AMU patients had medicine administered; the most common being Paracetamol (**26%**), Enoxaparin (**26%**) and lansoprazole (**13%**).

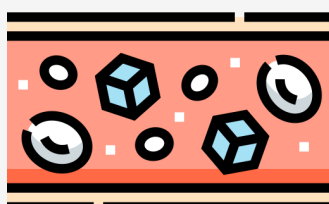
Inpatient care

- **1,335,540 Hospitalised spells;** containing **592,340** unique patients attended ED
- **3.2M** days worth of hospital data with an average in-hospital length of stay of 2 day
- In-hospital mortality rate of 2% and 96% of patients surviving 90 days after discharge
- The average National Early Warning Score (NEWS2) is 1.5 with a median of 1

Laboratory tests

Over **40.8M** laboratory tests recorded including:

- **15M** Full blood counts
- **11M** Liver function tests
- **2M** Blood gases/ pH analyser



Other lab tests are available.

Readmissions

20% of ED attendances have an emergency admission within 30 days of discharge.

30% of ED attendances have an emergency admission within 90 days of discharge.

